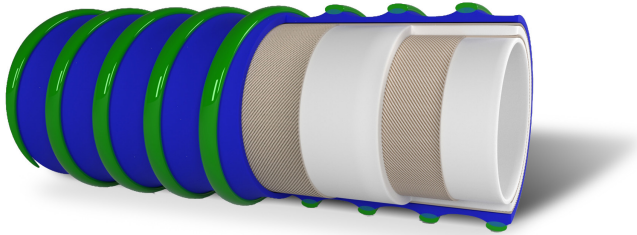




Lightweight and flexible tank transfer hose designed for fatty and oily food products. Well suited for dairies.




Technical Characteristics:

Temperature Range: -25 °C /+80 °C (-13°F/+176 °F)

Dimensional Tolerance: ISO1307

Hose Construction:

- Tube:** NBR, white, phthalates free, complies with 1907/2006/CE (REACH), FDA 21 CFR 177.2600, DM21.03.73 e seguenti, European Reglement 1935/2004/CE, 3A Sanitary Standard Class II
- Reinforcement:** Synthetic plies, External thermoplastic helix
- Cover:** Corrugated rubber cover with thermoplastic helix
- Color Options:** 
- Sterilization:** See cleaning and sterilizing guidelines for food and beverage hose.

Inside Diameter		Outside Diameter		Vacuum		Working Pressure		Burst Pressure		Weight		Bend Radius	
mm	in	mm	in	bar	psi	bar	psi	bar	psi	kg/m	lbs/ft	mm	in
38	1.5	-	-	0.9	13	10	150	30	450	1.21	0.81	80	3.15
51	2	-	-	0.9	13	10	150	30	450	1.62	1.09	100	3.94
63.5	2.5	-	-	0.8	11.5	10	150	30	450	1.96	1.31	130	5.12
76	3	-	-	0.8	11.5	10	150	30	450	2.37	1.59	150	5.91
102	4	-	-	0.7	10	10	150	30	450.00	3.06	2.05	200	7.87