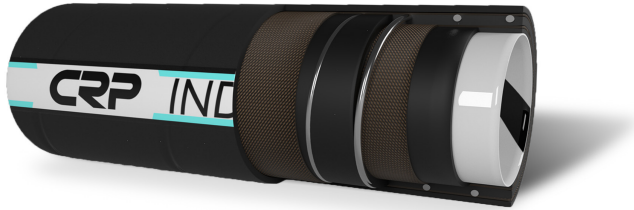





Fully conductive ($R < 10^9 \Omega$ through wall) suction and delivery hose for a wide variety of industrial chemicals. The thermoplastic tube provides enhanced chemical resistance.



Technical Characteristics:

- Temperature Range: $-35^{\circ}\text{C} / +100^{\circ}\text{C}$ ($-31^{\circ}\text{F} / +212^{\circ}\text{F}$)
- Dimensional Tolerance: EN12115
- Vacuum: 0.9 bar (13 psi)

Hose Construction:

- Tube:** UHMW, clear w/conductive black stripe, phthalates free, complies with 1907/2006/CE (REACH), FDA 21 CFR 177.2600, DM21.03.73 e seguenti, European Reglement 1935/2004/CE
- Reinforcement:** Synthetic plies, Galvanized steel wire helices, Antistatic copper wire
- Cover:** Smooth abrasion resistant EPDM cover
- Color Options:** 

Inside Diameter		Outside Diameter		Vacuum		Working Pressure		Burst Pressure		Weight		Bend Radius	
mm	in	mm	in	bar	psi	bar	psi	bar	psi	kg/m	lbs/ft	mm	in
25	1	37	1.46	0.9	13	16	250	64	1000	0.92	0.62	155	6.10
38	1.5	51	2.00	0.9	13	16	250	64	1000	1.39	0.93	240	9.45
51	2	67	2.64	0.9	13	16	250	64	1000	2.33	1.56	330	12.99
63.5	2.5	79.5	3.13	0.9	13	16	250	64	1000	3.09	2.07	415	16.34
76	3	92	3.62	0.9	13	16	250	64	1000	3.62	2.42	500	19.69
102	4	118	4.65	0.9	13	16	250	64	1000	4.67	3.13	675	26.57