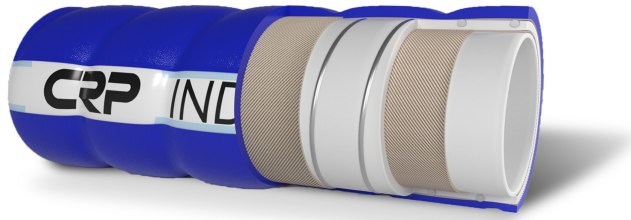





Premium grade suction and delivery hose specialized for fatty food products. Ideally suited for milk and dairy applications.



### Technical Characteristics:

- Temperature Range: -20 °C /+90 °C (-4 °F/+194 °F)
- Dimensional Tolerance: ISO1307
- Vacuum: 0.9 bar (13 psi)

### Hose Construction:

- Tube:** NBR, white, phthalates free, tested in compliance with 1907/2006/CE (REACH)  
Meets FDA 21 CFR 177.2600, DM21.03.73 e sequenti, European Reglement 1935/2004/CE, 3A Sanitary Standard Class II
- Reinforcement:** Synthetic plies, Galvanized wire helices
- Cover:** Wide corrugated, low friction UHMW cover. Non-marking, abrasion, chemical and microbe resistant.
- Color Options:** 
- Sterilization:** See cleaning and sterilizing guidelines for food and beverage hose.

Inside Diameter		Outside Diameter		Vacuum		Working Pressure		Burst Pressure		Weight		Bend Radius	
mm	in	mm	in	bar	psi	bar	psi	bar	psi	kg/m	lbs/ft	mm	in
25	1	37	1.46	0.9	13	10	150	30	450	0.81	0.54	70	2.76
38	1.5	51.5	2.03	0.9	13	10	150	30	450	1.23	0.82	80	3.15
51	2	66	2.6	0.9	13	10	150	30	450	1.9	1.27	100	3.94
64	2.5	78.5	3.09	0.9	13	10	150	30	450	2.31	1.54	130	5.12
76	3	92	3.62	0.9	13	10	150	30	450	2.91	1.94	150	5.91
102	4	118	4.65	0.9	13	10	150	30	450	3.8	2.53	250	9.84