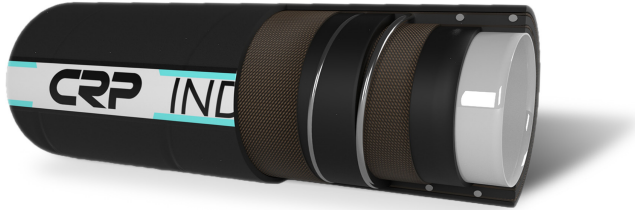





Top of the line suction and delivery hose for nearly all industrial chemicals. The FEP tube combines flexibility and purity with enhanced chemical resistance.



#### Technical Characteristics:

- Temperature Range: -40°C /+150 °C (-40°F/+302 °F)
- Dimensional Tolerance: EN12115
- Vacuum: 0.9 bar (13 psi)

#### Hose Construction:

- Tube: Fluorinated Ethylene Propylene (FEP), clear/white, phthalates free, complies with 1907/2006/CE (REACH), FDA 21 CFR 177.2600, DM21.03.73 e seguenti, European Reglement 1935/2004/CE, USP Class VI
- Reinforcement: Synthetic plies, Stainless steel wire helices, Antistatic copper wire
- Cover: Smooth abrasion resistant EPDM cover
- Color Options: 
- Sterilization: See cleaning and sterilizing guidelines

Inside Diameter		Outside Diameter		Vacuum		Working Pressure		Burst Pressure		Weight		Bend Radius	
mm	in	mm	in	bar	psi	bar	psi	bar	psi	kg/m	lbs/ft	mm	in
19	0.75	31	1.22	0.9	13	16	250	64	1000	0.70	0.47	130	5.12
25	1	37	1.46	0.9	13	16	250	64	1000	0.86	0.58	170	6.69
38	1.5	51	2.00	0.9	13	16	250	64	1000	1.43	0.96	255	10.04
50	1.97	66	2.60	0.9	13	16	250	64	1000	2.08	1.39	330	12.99
63.5	2.5	79.5	3.13	0.9	13	16	250	64	1000	2.96	1.98	430	16.93
75	2.95	91	3.58	0.9	13	16	250	64	1000	3.43	2.30	510	20.08
100	3.94	116	4.57	0.9	13	16	250	64	1000	4.60	3.08	675	26.57