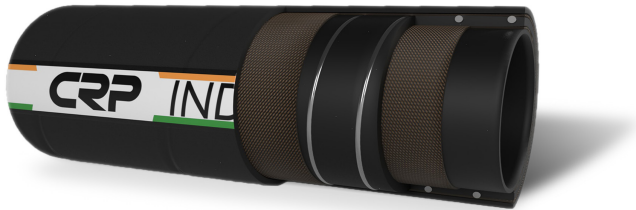





Suction and delivery hose for a wide variety of industrial chemicals. Fully conductive hose designed for use in Atex areas (Ex-Zone).



Technical Characteristics:

Temperature Range:	-40°C /+120 °C (-40°F/+248 °F)
Dimensional Tolerance:	EN12115
Vacuum:	0.9 bar (13 psi)

Hose Construction:

- Tube:** EPDM, Black, Conductive (Type Ω/T) according to En12115 Standards
- Reinforcement:** Synthetic plies, Galvanized steel wire helices
- Cover:** Smooth abrasion resistant EPDM cover
- Color Options:** 

Inside Diameter		Outside Diameter		Vacuum		Working Pressure		Burst Pressure		Weight		Bend Radius	
mm	in	mm	in	bar	psi	bar	psi	bar	psi	kg/m	lbs/ft	mm	in
25	1	37	1.46	0.9	13	16	250	64	1000	0.81	0.54	150	35.91
38	1.5	51	2.00	0.9	13	16	250	64	1000	1.30	0.87	225	8.86
51	2	67	2.64	0.9	13	16	250	64	1000	1.85	1.24	275	10.83
63.5	2.5	79.5	3.13	0.9	13	16	250	64	1000	2.70	1.81	300	11.81
76	3	92	3.62	0.9	13	16	250	64	1000	3.05	2.05	350	13.78
102	4	120	4.72	0.9	13	16	250	64	1000	5.00	3.36	450	17.72