

Perske Synchronous Motors

Ideal for highly dynamic or space-limited applications.

Motor Description:

- Small, lightweight construction due to very high power density
 - Weight reduction by over 40%
 - Performance increase by over 100%
- Energy-saving due to high efficiency, increase by up to 20%
- High overload capacity up to > 3 x rated torque
- Constant speed up to approximately three times the rated output
- Robust, lifetime-lubricated, maintenance-free bearing
- Easy to install since there is no speed feedback
- Suitable as direct tool supports



Performance Guide: PERSKE Synchronous Motors

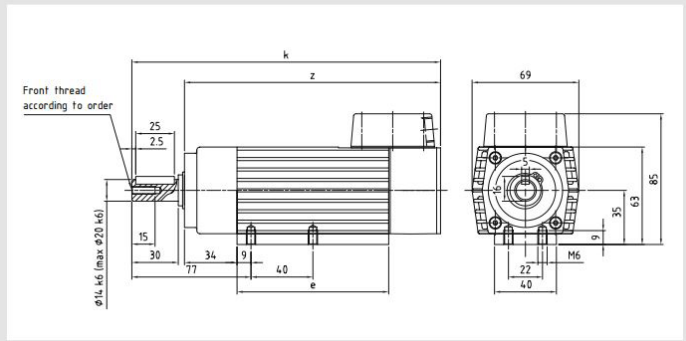
Type	Weight kg	Output (kW/HP@S1 duty)			
		12,000 rpm	18,000 rpm	24,000 rpm	30,000 rpm
KN 21.04-4S	1.8	0.5	0.65		
KN 22.08-4S	2.5	1.0	1.3		1.0
KN 24.12-4S	3.2	1.5	2.0		
KR 35.1-4S	3.8	1.5	2.0		
KR 35.5-4S	4.7	2.0	3.0		
KR 35.7-4S	5.5	3.0	4.0		
K 50.12-4S	12.5	5.0	7.0	8.0	
K 52.16-4S	13.5	7.0	9.0	10.5	



www.crpperske.com

KN 20 S

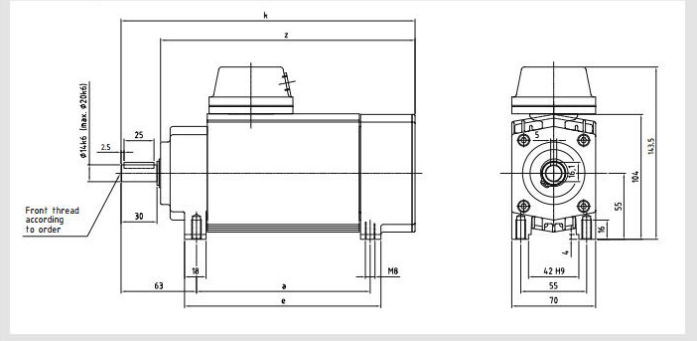
Drawing MS 151-188



Type	e	k	z
KN 21.04S	93	200	166
KN 22.08S	133	235	201
KN 24.12S	173	275	241

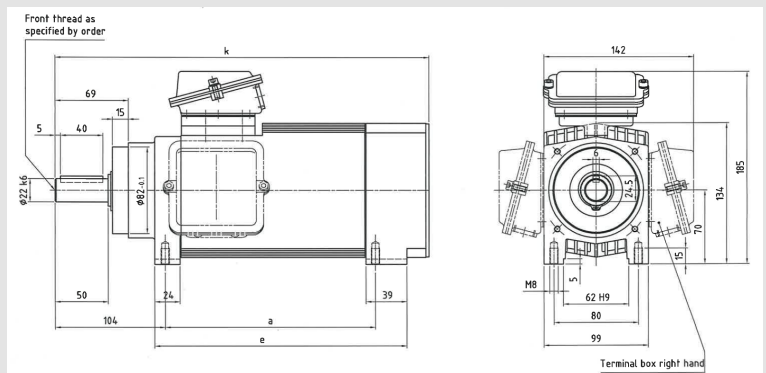
KR 35 S

Drawing MS 4490

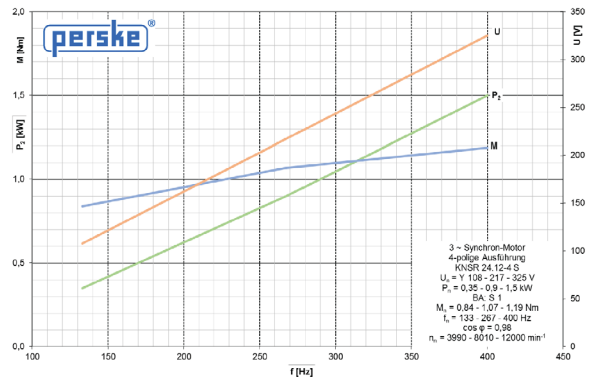


Type	a	e	k	z
KR 35.1S	145	165	245	212
KR 35.5S	215	235	315	282
KR 35.7S	235	255	335	302

K50



Type	a	e	k
K50DS	200	240	355
K52DS	250	290	405



35 Commerce Drive • Cranbury, NJ 08512
 Tel: 609.578.4100 • Fax: 609.578.4110
 www.crpperske.com

© CRP Industries Inc. All rights reserved.

