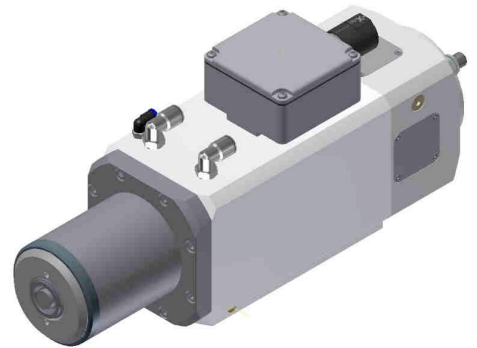


Perske Automatic Tool Change Motor with HSK-E32 Tool Changing System

Ideal for variable speed cutting and shaping applications.

Motor Description:

- Compact automatic tool change spindle with the quality and dependability of the Perske name
- High speed, compact, dual cooling mode, extended nose for simple mounting of ventilation systems, and top of the line components
- Lifetime lubricated, high precision angular contact bearings
- Designed to reliably produce specified power and torque
- Continuous duty rated (S1-100%)
- 4 pole design allows for additional torque
- Industry leading vibration levels of 0.0-0.02in/sec



Performance Guide: PERSKE Motor Series with HSK-E32 for automatic tool change

Voltage	Forced Air Cooling			Water Cooling		
	Y 400 V		Δ 230 V	Y 400 V		Δ 230 V
Frequency	533 Hz	833 Hz	1066 Hz	533 Hz	833 Hz	1066 Hz
Power	4.0 kW	4.0 kW	3.0 kW	6.5 kW	6.5 kW	5.0 kW
Speed	15820 rpm	24700 rpm	31650 rpm	15730 rpm	24400 rpm	31400 rpm
Torque	2.41 Nm	1.55 Nm	0.91 Nm	3.95 Nm	1.54 Nm	1.52 Nm
Rating	Continuous Duty (S1 – 100%)			Continuous Duty (S1 – 100%)		

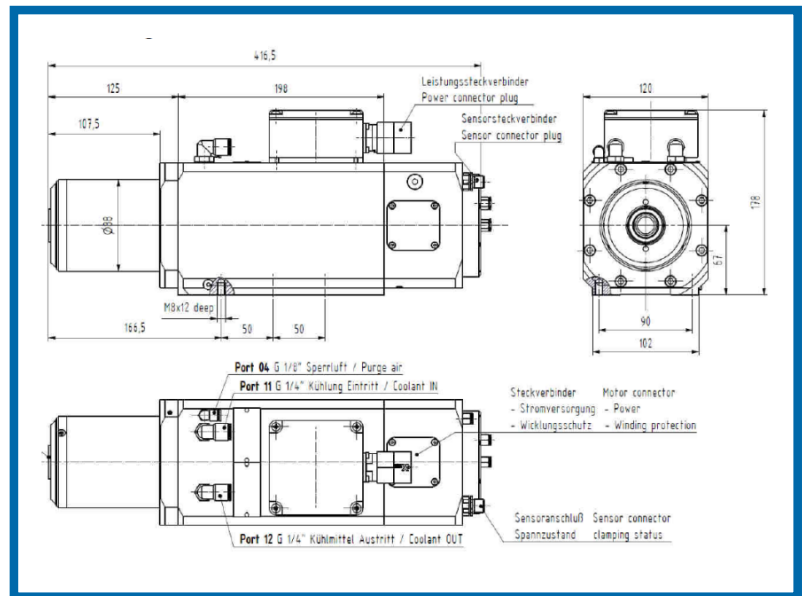


www.crpperske.com

HSK-E32 Automatic Tool Changing System:

Benefits:

- Compact square frame to allow for versatility in cutting geometry
- Extended nose is ideal for flexibility in mounting of ventilation systems
- Double front and rear bearing provides additional stability to provide ideal rotor dynamics and eliminate axial play
- Designed to allow for both forced air or water cooling
- Ability to provide motor with plugs specified by customer or terminal box wired for delta or star connection
- Flexibility of design to allow for customized solutions



Tooling:

- Tooling must be balanced to G6.3 specifications (minimum requirement for standard routing). For the larger tool weights, G2.5 specs are required
- Maximum diameter of the tool can be 12.5" (320 mm)
- Maximum tool center of gravity is 3.9" (100 mm) in front of HSK plane surface
- Maximum tool weights are determined for each Perske motor type



35 Commerce Drive • Cranbury, NJ 08512
Tel: 609.578.4100 • Fax: 609.578.4110
www.crpperske.com

© CRP Industries Inc. All rights reserved.

